

Guide to update stock data using Datafet Application

1 Introduction

Datafet is an application to help update stock data all over the world in real time. Datafet uses most advance technique to get data fast and realizable. Stock data updated by Datafet can be readable by most famous technical analytic software like Metastock, Amibroker or Metatrader.

Note: Some stock exchanges currently not support real-time updating data, which may delay up to 10 mins.

2. Software Requirement

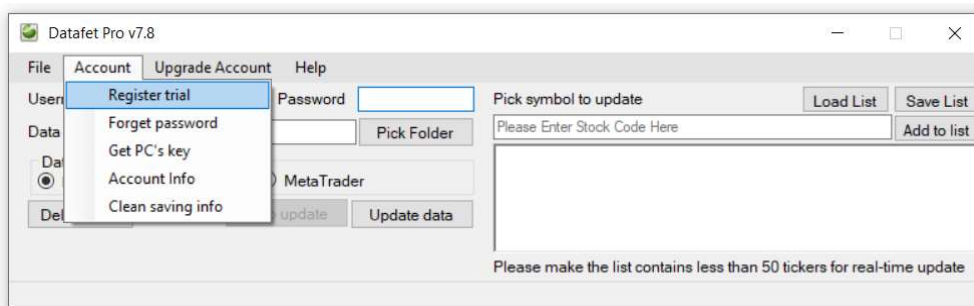
- Datafet runs good on window PC from window 7 and above with both 32 bits and 64 bits version supported
- The system need to have .NET framework installed. If the system asks you to download and install .NET framework, please do as it suggests. You also can download .NET framework version 4.5 from Microsoft website at <https://www.microsoft.com/en-us/download/details.aspx?id=30653>

3. Installation

- You download file DatafetPro.exe from <http://www.datafet.com> and save it to your desktop or your favorite location
- Double click on the file above and follow instruction to installed the app to your PC
- Remember to save the shortcut on your desktop for easy access and run it every day

4. Register new account

In order to update stock data to your PC, you first need to open an account. You go to “Account” on menu bar and choose “Register trial”



New form appears and you need to fill in all fields before click “Register”



Register new account

Username Full name
 (Username not allow space or special character)

Password Retype Password

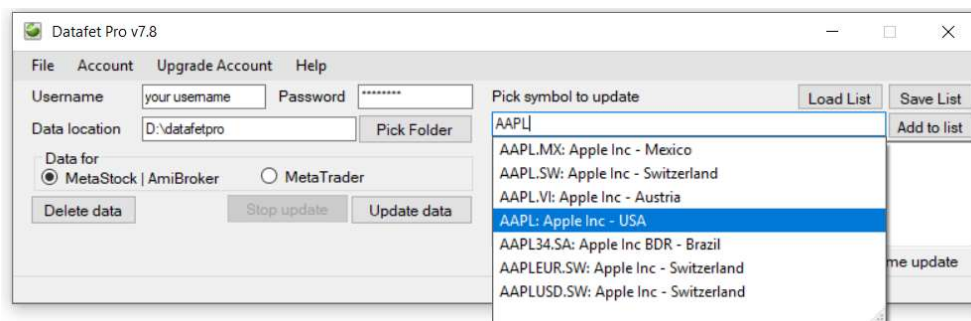
Email Telephone

Telephone need when you forget password so please use your own number

The message notices your registration successfully will appear and you now have 10 days trial for premium account.

5 Update stock data

After you have an account, you can type the information on Datafet main screen. Data location is where you want to store stock data for the list of stock you picked. Depend on the software you want to read data for charting, you may choose option Metastock|AmiBroker or Metatrader. You need to define the list of stock you want to update first. For example, you type AAPL in the textbox for Apple stock, the suggested list will appear and you can pick stock AAPL which is traded in NASDAQ stock exchange in USA (the other symbols traded in other countries not in USA). Then you click “Add to list”



Datafet Pro v7.8

File Account Upgrade Account Help

Username Password

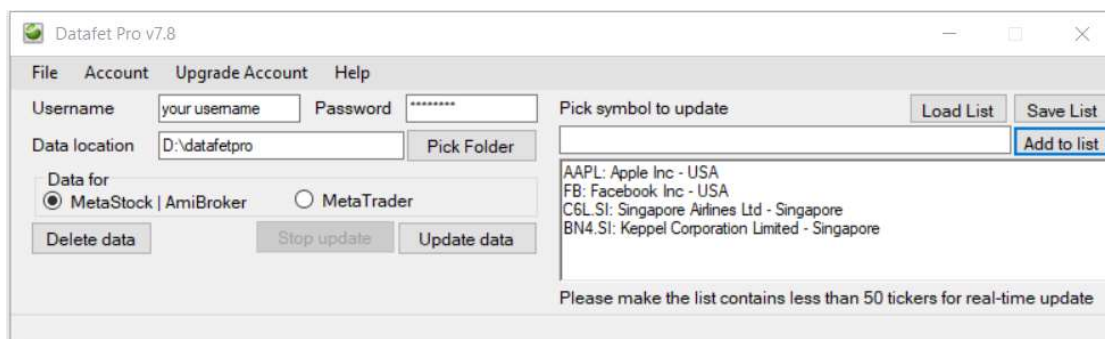
Data location

Data for
☒ MetaStock | AmiBroker ☐ MetaTrader

Pick symbol to update

AAPL
 AAPL.MX: Apple Inc - Mexico
 AAPL.SW: Apple Inc - Switzerland
 AAPL.VI: Apple Inc - Austria
AAPL: Apple Inc - USA
 AAPL34.SA: Apple Inc BDR - Brazil
 AAPLEUR.SW: Apple Inc - Switzerland
 AAPLUSD.SW: Apple Inc - Switzerland

Here is my list contains 4 stocks, 2 from Singapore and the rest from USA



Datafet Pro v7.8

File Account Upgrade Account Help

Username Password

Data location

Data for
☒ MetaStock | AmiBroker ☐ MetaTrader

Pick symbol to update

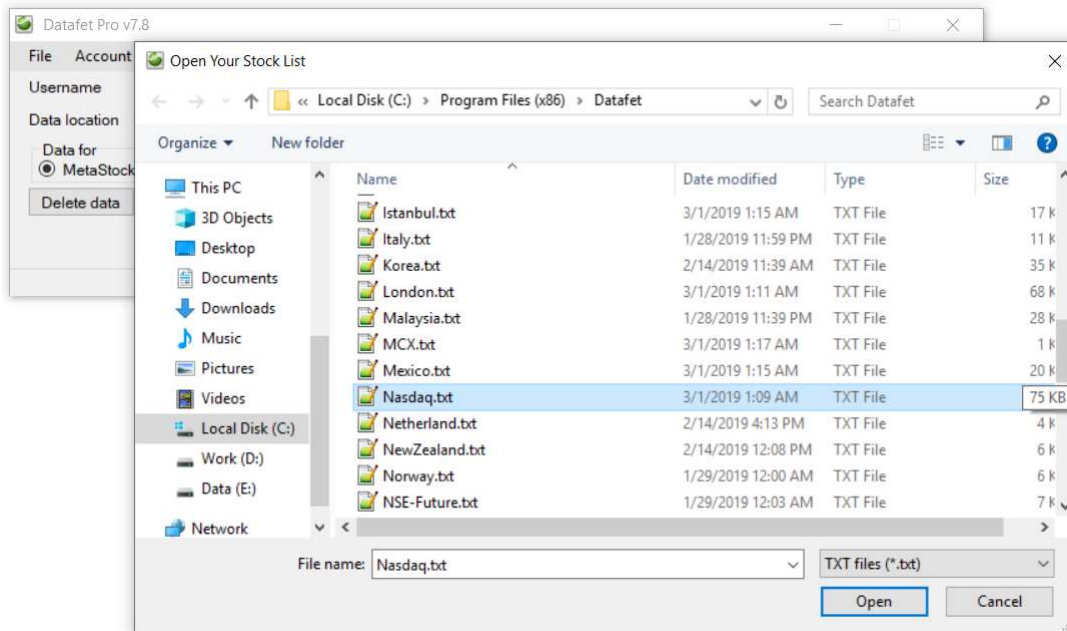
AAPL: Apple Inc - USA
 FB: Facebook Inc - USA
 C6L.SI: Singapore Airlines Ltd - Singapore
 BN4.SI: Keppel Corporation Limited - Singapore

Please make the list contains less than 50 tickers for real-time update

Intraday data is stored in sub folder “intraday” inside the location you input to Datafet. For the image above, intraday data stored in location “D:\datafetpro\intraday”, location “D:\datafetpro” store EOD data

You only need to type the information first time, the next time Datafet start will automatically load the last information you saved. You can pick list of tickers for some stock exchanges by click button ‘Load List’

then choose the stock exchange you want, if you cannot see some suggested list, please pick folder “C:\Program Files (x86)\Datafet” the location you installed Datafet app



Please note when you update the list contain too many tickers first time, it may take 15 to 30 minutes to finish, next time it will only download missing data so faster. For real-time update, we suggest you create other list which contains less than 50 tickers. You can update long list after trading hour and short list during trading hour for the same data folder you saved on your PC.

For Metatrader you need to save in the right historical data folder of your MT4. Metatrader normally store historical data in "C:\Program Files (x86)\FxProMT4\history\FxPro.com-Demo01" where Demo01 (or Demo02) is the server you choose when you create demo account from Metatrader. You can download Metatrader free from <https://datarepo.fxpro.co.uk/platforms/fxpro4setup.exe>

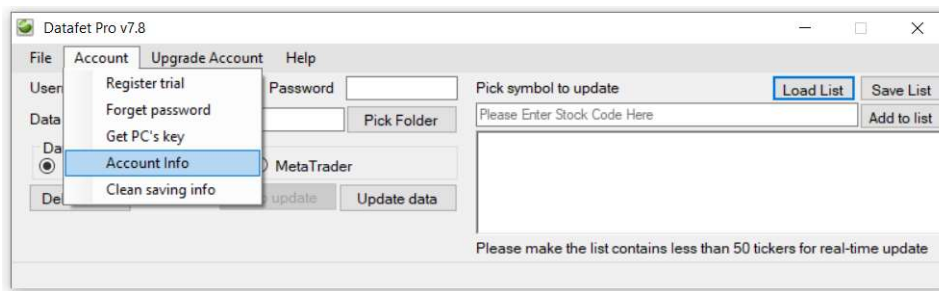
Click “Update data” to update stock data real-time. The first time you update, it may take few minutes to download initial data from the exchange you want to get data. The next time, it only updates the loss date data so must faster. For setup Amibroker, Metastock or MT4 with our data, refer to section 8, 9, and 10.

You should not run two Datafet app on the same PC at same time to get data from multiple stock list because it will cause update data problem.

6 Buy Premium account

When you register trial, you have 10 days for free update stock data for all stock exchanges. After that period, you need to buy license for your PC in order to continue update stock data.

To view your account’ license, you go to Account->Account Info



6.1 License type

Each license is valid for one account. You can use your account to update data real-time on 1 PC at a time, not allow running on multiple PC at same time.

6.3 How to buy

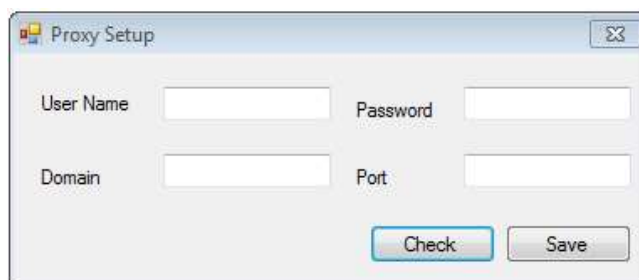
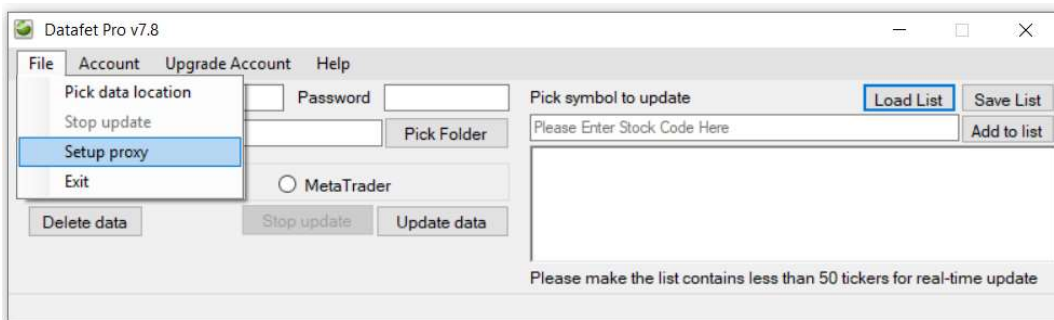
You go to <https://www.datafet.com> and click on purchase license or pay directly using link <https://www.paypal.me/dvkhanh>

You will be transferred to <https://www.paypal.com> to make a payment.

Please specify the username when you make a transfer.

7 Proxy Setup

If your PC run inside your company network which has proxy setup, you need to add this proxy to the application in order for Datafet connect to the internet. You go to File-> Setup Proxy



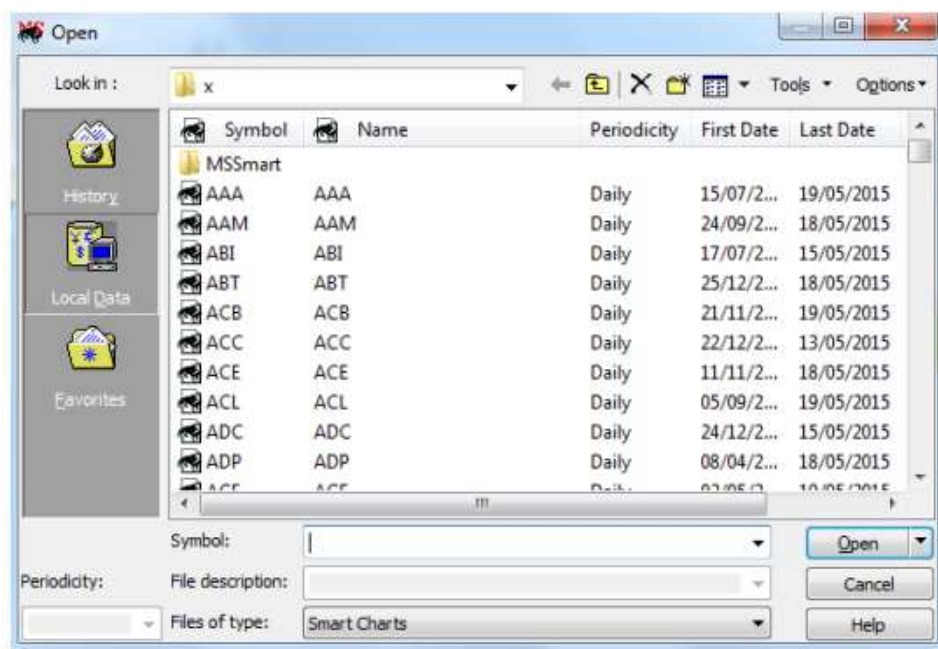
You fill in the fields all requirements and click Save to save proxy configuration.

8 View chart in Metastock

Open Metastock, choose File -> Open on menu bar and open the path you stored stock data downloaded by Datafet to load all securities. Click any stock symbol to open chart in Metastock

Note: When you open Datafet and click "Update data", you need to wait 20 second and more before open chart in Metastock because both app will access same common files in the data folder which may causes error happen. You can open stock chart of any stock in the data folder first before click "Update data" to update without any error.

If you want to view intraday data, you need to use Metastock Pro version, EOD version not allow you to view intraday data.



9 View chart in Amibroker

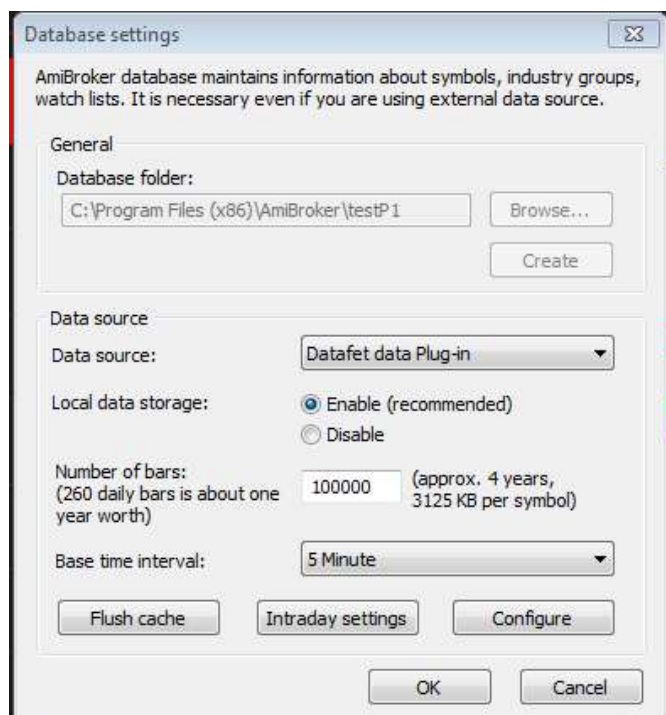
We create new data plugin used for AmiBroker to load our Metastock data, you can find files **datafet.dll** or **datafet64.dll** from Datafet installed folder, normally at **C:\Program Files (x86)\Datafet** or you can download plugin from www.datafet.com/datafet.dll for Ami 32 bits or www.datafet.com/datafet64.dll for Ami version 64 bits.

Copy file **datafet.dll** or **datafet64.dll** into **Plugin** folder inside installed folder of AmiBroker, this folder normally created at **C:\Program Files (x86)\AmiBroker\Plugins** or **C:\Program Files\AmiBroker\Plugins** for version 64 bits.

You need to stop and re-start Ami in order for Ami to find this new data plugin.

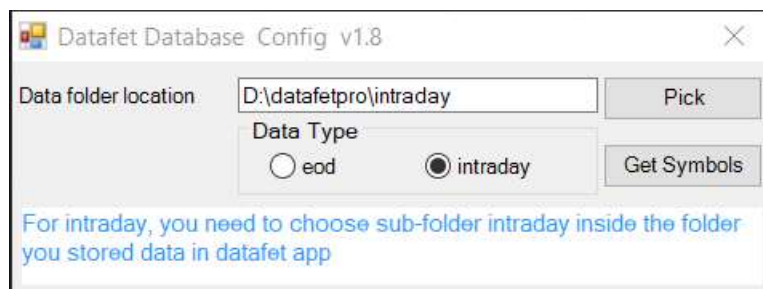
Open Amibroker, choose File -> New database or File -> Database setting from menu bar, new window appear, you need to enter database name (for example C:\Program Files

(x86)\AmiBroker\testP1). Click Create for first time setup Database for Amibroker, this database folder is not the same as the stock data folder you download using Datafet. Choose Data source is **Datafet Data Plugin** as shown below.



You need to choose “**Number of bars**” large enough in order to view full stock data download using Datafet. Choose Disable for local data storage.

Press **Configure** button and input location for Metastock data you download using Datafet, you need to click “**Get Symbol**” for Ami to load all stock symbols in Database used by Amibroker



This Plugin automatic refresh chart when new data update for the security you are watching.

You now can see all stock symbols in the symbol panel. You can choose any symbol you want to open to view its chart

10 View chart in Metatrader

Open Metatrader 4 and register 1 demo Account. Depend on demo server 1, 2 or 3 you need to download stock data to correct history folder in Metatrader. For example, I open trial account at with named demo2 then my historical data folder look like “C:\Program Files (x86)\FxPro - MetaTrader 4\history\FxPro.com-Demo02”. You need to put this location to text box “Data location” in Datafet app and run update to download stock data to that folder. Choose File-> Open Offline and find the symbol you want to open chart.

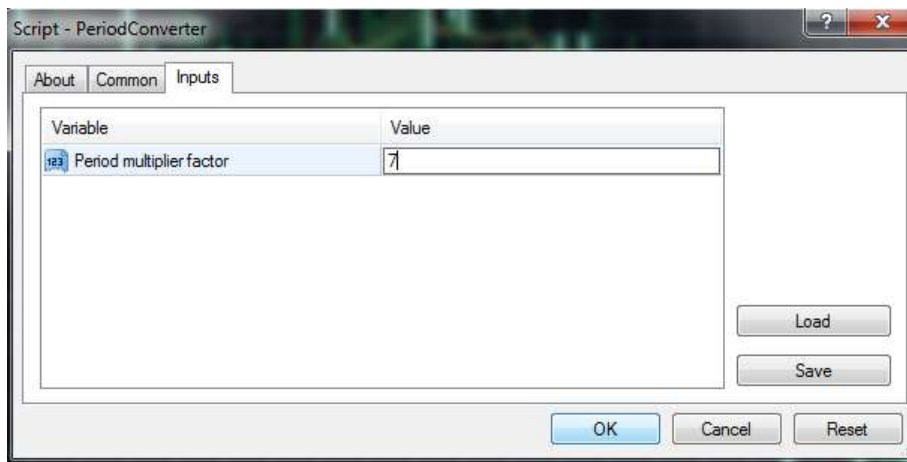


If using the above method, you cannot find stock symbol then MetaTrader setup to read data from other location which may be AppData folder (your account may not have permission to write data to C driver so MetaTrader automatically move its data folder in to AppData folder). In this case you need to choose **"Open Data Folder"** from "File" menu. You will find historical folder inside the new open window, choose the right sever name to saved data in datafet app

In order to make chart auto refresh, you need to download our indicator at www.datafet.com/Datafet.ex4

You need to copy file Datafet.ex4 to indicator folder of Metatrader. When using the indicator to the chart, make sure you choose **"Allow DLL Imports"**. The indicator will refresh stock chart automatically to update new data.

To view stock weekly, you need to use PeriodConverter script inside Script folder



New screen PeriodConverter appears, for Input field, enter 7, click OK to generate weekly chart for this stock, you can find this chart in File-> "Open Offline"

11 Disclaimer

Datafet Team takes no responsibility for your trading performance based on our data. Data provided by Datafet is one reference help you make better decision.

We are very pleased to serve you. We always try to improve our product to make it more stable, faster and more reliable. If you face any issue or any enquiry please drop us an email to dvkhanhvn@gmail.com or contact us through skype **dvkhanhvn**

Best Regards,

Datafet.com

----- End-----